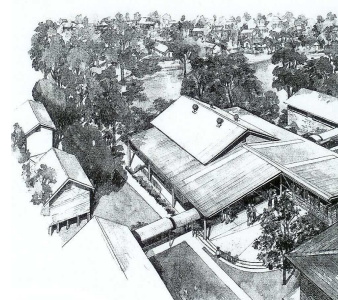




TELARAH PUBLIC SCHOOL NEWSLETTER



Phone: 4932 8477 **Fax:** 4932 4475
Email: telarah-p.school@det.nsw.edu.au
Principal: Mr Jim Wiblen

Term 1, Week 8

15 March 2010

DATES TO REMEMBER

16 Mar	Coffees Gala Day
16-18 Mar	Stage 1 Excursion
19 Mar	Harmony Day, EOI due
22 Mar	Choir Performance
22/23 Mar	Literacy & Numeracy Tests
24/25 Mar	Stage 2 Excursion to Newcastle
29/30 Mar	Music Camp
31 Mar	P&C Raffle Drawn
1 Apr	Last Day of Term
19 Apr	Staff Development Day
20 Apr	Students Return for Term 2

PARKING RANGER

The Council Parking Ranger has advised that they will be monitoring traffic around Telarah Public School over the next few weeks. Special attention will be given to parking and stopping regulations around the school. To prevent parents and community members receiving fines, I request that all traffic signs be obeyed. Please be extra careful when driving near the school crossings in George and Raymond Streets.

HUNTER VALLEY BUSES

The Hunter Valley Bus Company has advised us that they will be supervising bus behaviour over the next few weeks. This supervision will also include checking bus passes. If your child is not entitled to a bus pass they must pay to travel on the bus. Please ensure that your

child carries their bus pass on a daily basis.

INCLOSED LANDS PROTECTION ACT 1901

Entry in the school grounds is a PRIVILEGE not a RIGHT!

Unfortunately in recent weeks I have had to withdraw this privilege to some parents under the Inclosed Lands Protection Act 1901 for their inappropriate behaviour.

Circumstances that may justify the use of powers available under the Act include:

- Actual physical assault or threatened physical assault on students, staff, parents or community members at the school or during school activities;
- Behaving in an inappropriate manner in the presence of students, staff, parents or visitors to the school. Sometimes the major concern is not what is said by the person but rather the manner in which they act while engaging with staff, students and other persons;
- Use of offensive language (eg swearing) in school grounds;
- When people persistently interrupt the learning environment of the school or institute by entering classrooms without permission;
- When people persistently enter in the school or institute site without

permission or legitimate reason.

I have an obligation to ensure that Telarah Public School premises are safe for students, staff, parents and visitors. I request all parents to assist in this matter.

MEDICATION AT SCHOOL

A reminder to parents that children should not have tablets or medication in their school bag or lunch box. If a child needs to take medication during the day, parents are asked to provide the tablets / medication to the front office or send in a note to the school so that all medication can be stored securely. Thank you for your assistance in this matter.

STRANGER DANGER

The 'Stranger Danger' message is an important one both at school and in the outside community. At school, teachers promote the 'Stranger Danger' concept in PD, Health & PE lessons. Please reinforce the following messages with your children:

- A stranger is someone your child does not know very well
- Tell your child not to talk to strangers
- Don't allow your child to take gifts from strangers
- Tell your child if it doesn't 'feel right' to tell someone
- Children should go home via their normal school route.